

Head Office:
MARS Complex, Poothole Road, Thrissur, Kerala
India - 680 004. Ph: +91 487-2385001, 2385002
E-mail: customerservice@starline.in
www.starlineenterprises.in

Factory:
Sree Sai Krithika Industrial Estate
4 / 293, S.F. No. 221 & 91, Sreerapalayam,
Post - Podipalayam, Coimbatore, Tamil Nadu,
India - 641 105

Duct Mount

Catalogue Number : 9000114 : Rev. 01 Dated 11-10-2014

1. Compliance:

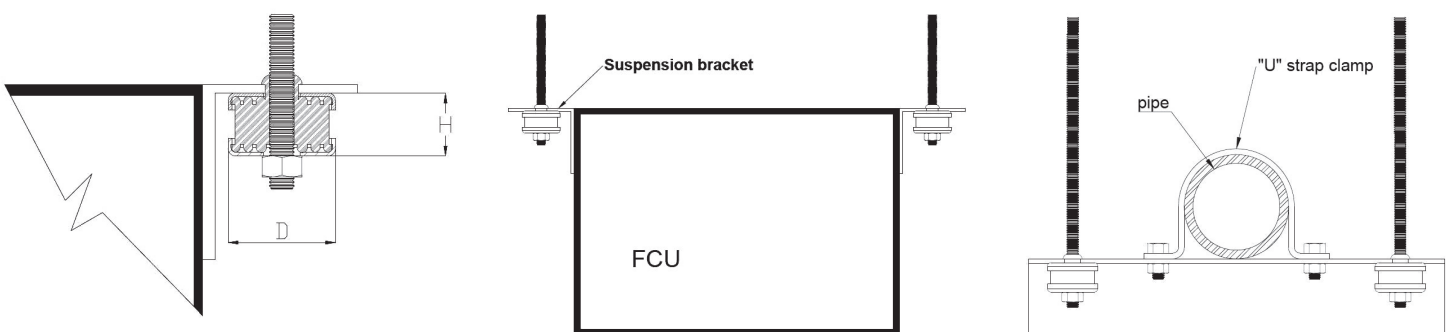
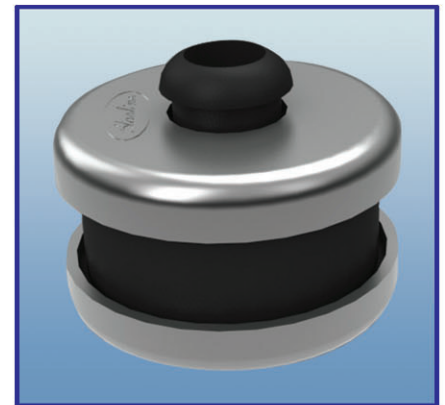
- a) British Standards, BS 3974 : Part I

2. Application:

- a) To control transmission of noise to the building structure, Starline Duct Mounts serve as acoustic separators between sources of high frequency vibration and their suspension rods. Some example applications are illustrated below.

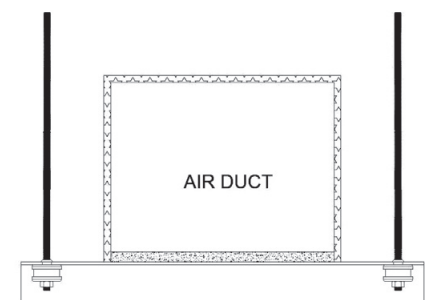
3. Product Features:

- a) Resilient rubber grommet with steel load distribution cups and extended sleeve, designed to reduce transmission of structure born noise from air ducts and suspended equipments / small pipes.
- b) Supplied complete with top and bottom steel load distribution cups, electrogalvanised after manufacture for maximum corrosion resistance.
- c) Extended sleeve of rubber element prevents metal to metal contact between suspension rod and suspension bracket / trapeze channel.
- d) Available in two different sizes to suit width of duct / equipment suspension channel.
- e) Colour coded for identification of Capacity.



SELECTION TABLE - DUCT MOUNT (Table No: C-30-01)

Isolator Model	Colour Code	Capacity Kg (7.5mm deflection)	Dimensions (mm)		Recommended Suspension Rod
			H	D	
SDM-L		30	26	32	M8
SDM-A1	Green	50	26	44	M8
SDM-A2	Red	100			M10



Due to policy of continual improvement, the specifications are subject to change without prior notice.