

**Head Office:**  
MARS Complex, Poothole Road, Thrissur, Kerala  
India - 680 004. Ph: +91 487-2385001, 2385002  
E-mail: customerservice@starline.in  
www.starlineenterprises.in



**Factory:**  
Sree Sai Krithika Industrial Estate  
4 / 293, S.F. No. 221 & 91, Sreerapalayam,  
Post - Podipalayam, Coimbatore, Tamil Nadu,  
India - 641 105

## Neoprene Floor Mount

Catalogue Number : 9000112 : Rev. 01 Dated 07-10-2014

### 1. Compliance:

- a) Designed to BS 1726 -1 : 1987
- b) Tolerance to BS 1726-1 : 2002
- c) SAE and Ashrae Guidelines for Vibration Isolation

### 2. Application:

- a) Neoprene Floor Mounts are used to isolate Noise and Vibration from high frequency Mechanical Equipments, typically 1,500 rpm or more. Generally these are used for vibration and noise isolation of wall mounted Condensing Units, Close Coupled Pumps with 5 HP or less Motor Rating, Low Pressure Pack etc..

### 3. Product Features:

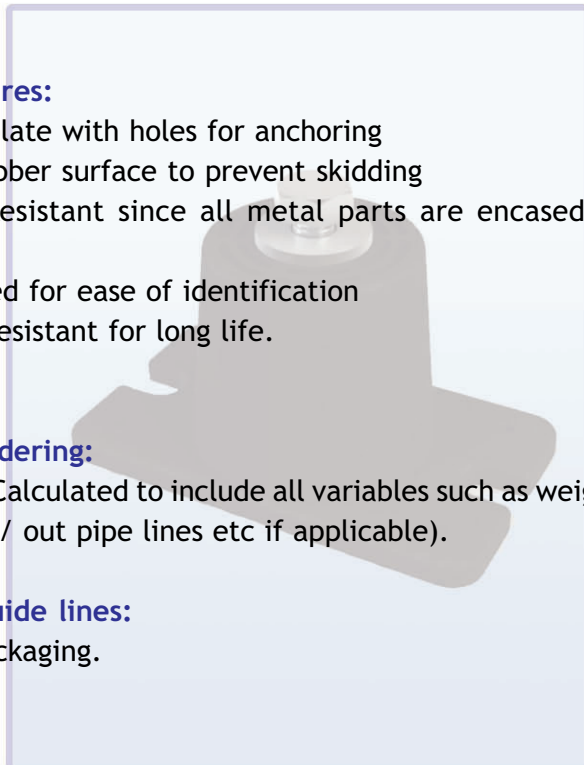
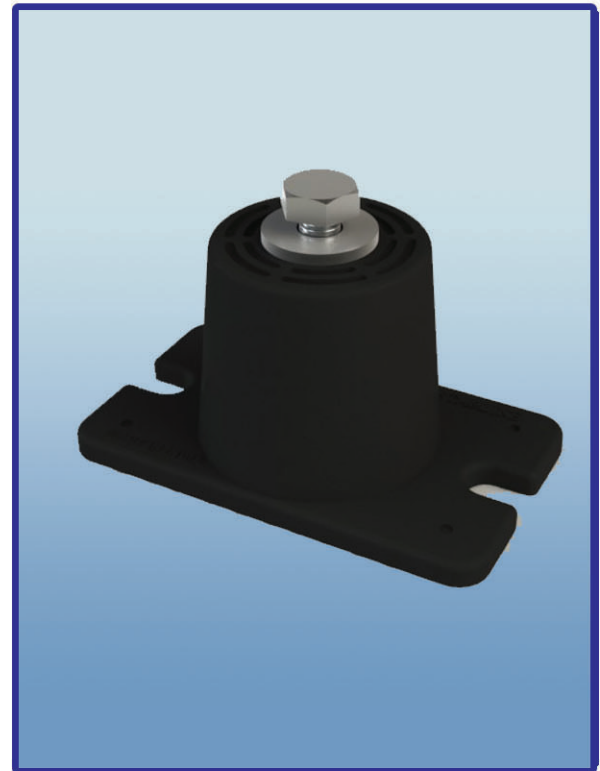
- a) Bolt down plate with holes for anchoring
- b) Serrated rubber surface to prevent skidding
- c) Corrosion Resistant since all metal parts are encased in rubber
- d) Colour Coded for ease of identification
- e) Highly Oil Resistant for long life.

### 4. Selection / Ordering:

- a) Point load (Calculated to include all variables such as weight of water in / out pipe lines etc if applicable).

### 5. Installation Guide lines:

- Included in packaging.



## SELECTION TABLE (Table No: C-28-01)

Model	Colour Code	Rated Load (Kg)	Rated Deflection(mm)	Dimensions (mm)					
				L	W	H	BP	D	d
SFM-A-R	Red	18	8	80	46	40	60	M8	M8
SFM-A-G	Green	35							
SFM-A-B	Blue	50							
SFM-B-R	Red	100	10	94	60	46	78	M10	M10
SFM-B-G	Green	140							
SFM-B-B	Blue	200							
SFM-C-R	Red	250	10	135	82	70	115	M12	M12
SFM-C-G	Green	350							
SFM-C-B	Blue	500							
SFM-D-R	Red	600	13	145	92	85	120	M12	M12
SFM-D-G	Green	700							
SFM-D-B	Blue	900							
SFM-E-R	Red	1200	13	175	130	90	150	M12	M12
SFM-E-G	Green	1800							

## Neoprene Floor Mount

