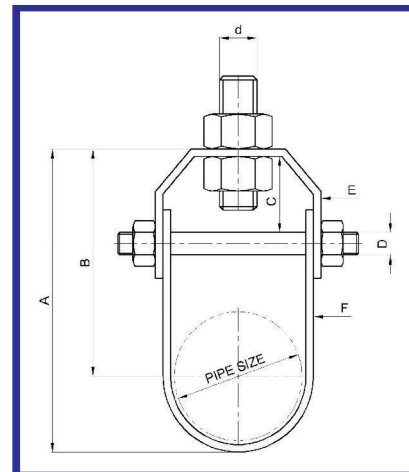
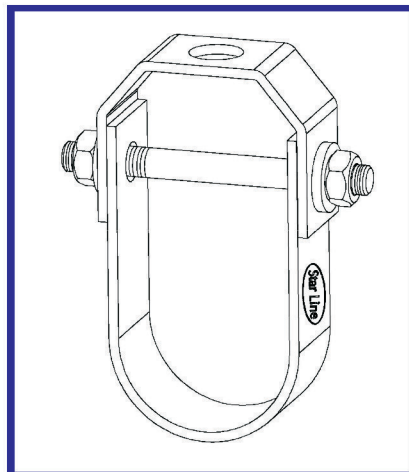


Clevis Hanger

Catalogue Number : 8000102 : Rev. 01 Dated 07-10-2014



SELECTION TABLE (Table No: B-05-01)

Model	Steel Pipe Nominal	Dimensions in mm							Max. Load (Kg)
		A	B	C (Adjustment)	D	D	E	F	
CHS 25	1"	80	60	20	M6	10	2 x 20	2 x 20	250
CHS 30	1¼"	90	65	20	M6	10	2 x 20	2 x 20	250
CHS 40	1½"	100	75	25	M6	10	2 x 20	2 x 20	250
CHS 50	2"	120	85	30	M6	10	2 x 20	2 x 20	250
CHS 65	2½"	145	105	35	M8	12	3 x 25	3 x 25	350
CHS 75	3"	170	120	45	M8	12	3 x 25	3 x 25	350
CHS 88	3½"	190	135	45	M8	12	3 x 25	3 x 25	350
CHS 100	4"	205	145	50	M10	12	5 x 25	3 x 25	500
CHS 125	5"	250	175	55	M12	16	5 x 30	3 x 30	650
CHS 150	6"	280	190	55	M12	16	5 x 30	5 x 30	650
CHS 200	8"	340	225	60	M16	20	5 x 38	5 x 38	950
CHS 250	10"	400	255	60	M16	22	6 x 38	5 x 38	1150
CHS 300	12"	460	285	60	M16	22	10 x 50	6 x 50	1700
CHS 350	14"	510	320	65	M20	24	10 x 50	8 x 50	1700
CHS 400	16"	565	350	70	M24	24	12 x 60	6 x 60	2200
CHS 450	18"	650	410	100	M24	24	12 x 60	6 x 60	2200
CHS 500	20"	725	460	100	M30	30	12 x 75	10 x 75	2400
CHS 600	24"	840	520	100	M30	30	16 x 75	10 x 75	2700
CHS 750	30"	1025	620	125	M36	30	20 x 75	10 x 75	3100
CHS 900	36"	1210	730	150	M36	30	20 x 75	10 x 75	4500

1. Compliance:

- a) Federal Specification AS-A-1192 (Type 1)
- b) MSS-SP58 (Type 1)
- c) MSS-SP69
- d) WW-H-171E (Type 1)
- e) EG-ASTMB 633 SC3, BS 1706 FE / ZN 12

2. Application:

- a) To achieve effective level installation of pipe lines.
- b) Fire fighting and chilled water pipe work.
- c) Independent suspension of large pipes.
- d) Suspension of insulated or plain stationary piping.
- e) Suitable for sound suppression in pipe lines.

3. Product Features:

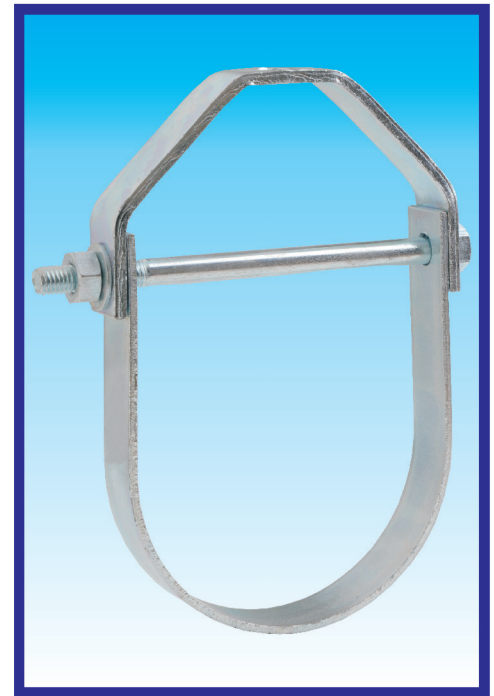
- a) Allows vertical level adjustment of pipe lines after installation.
- b) Models CHS250 and above are fitted with steel spacer sleeve as standard.
- c) Optional EPDM lined hangers are available to minimize condensation, improve noise attenuation and prevent contact between dissimilar metals.
- d) Material : Mild Steel electro galvanized. Optional hot dip galvanized / stainless steel.

4. Selection / Ordering:

- a) Bare piping : OD.
- b) Insulated Piping : effective OD or pipe size plus insulation thickness.
- c) Whether Starline Rubber Support Inserts are proposed to be used.
- d) Material Specs :
 - EPDM lined: (Suffix "R").
 - Epoxy powder coated finish (Suffix "EPC").
 - Hot dip galvanizes (Suffix "HDG")
 - Stainless Steel (Suffix "SS")

5. Installation Guide lines:

- a) Suspension nuts to be provided with oversized washers and tighten properly to ensure proper hanger performance.



Clevis Hanger

Note:

- Due to policy of continual improvement, the specifications are subject to change without prior notice.
- Measurements are subject to 5% tolerance.

